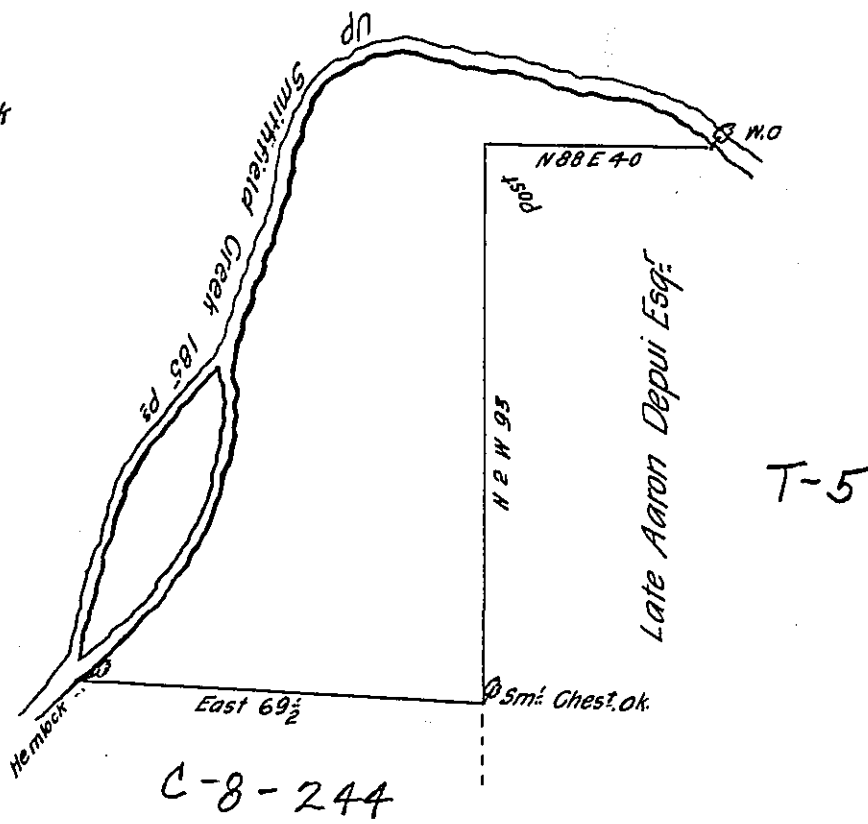


Bearings & distances up Creek  
Including the Island.

N 65° W	12
N 80° W	52
S. W.	13
S 15° W	45
S 40° W	30
S 7° W	33
	<u>185</u>



A Draught of a tract of land situate in lower Smithfield Township  
Northampton County. Containing thirty two acres three quarters and the allowance  
of 6 P Cent &c? Including the Island. Surveyed the 25 May 1782 to Garret  
Broadhead Esq? in Right of James Logan on Warrant dated the 12<sup>th</sup> April 1776

P- Geo Palmer

IN TESTIMONY that the above is a copy of the original remaining on file in  
the Department of Internal Affairs of Pennsylvania, made  
conformably to an Act of Assembly approved the 16th day of  
February, 1833, I have hereunto set my Hand and caused  
the Seal of said Department to be affixed at Harrisburg,  
this twentieth day of July 1905.

*Loac R Brown*  
Secretary of Internal Affairs.